

Container Grading FEA

General requirements for MSK Grade containers

All container grades must ensure containers are

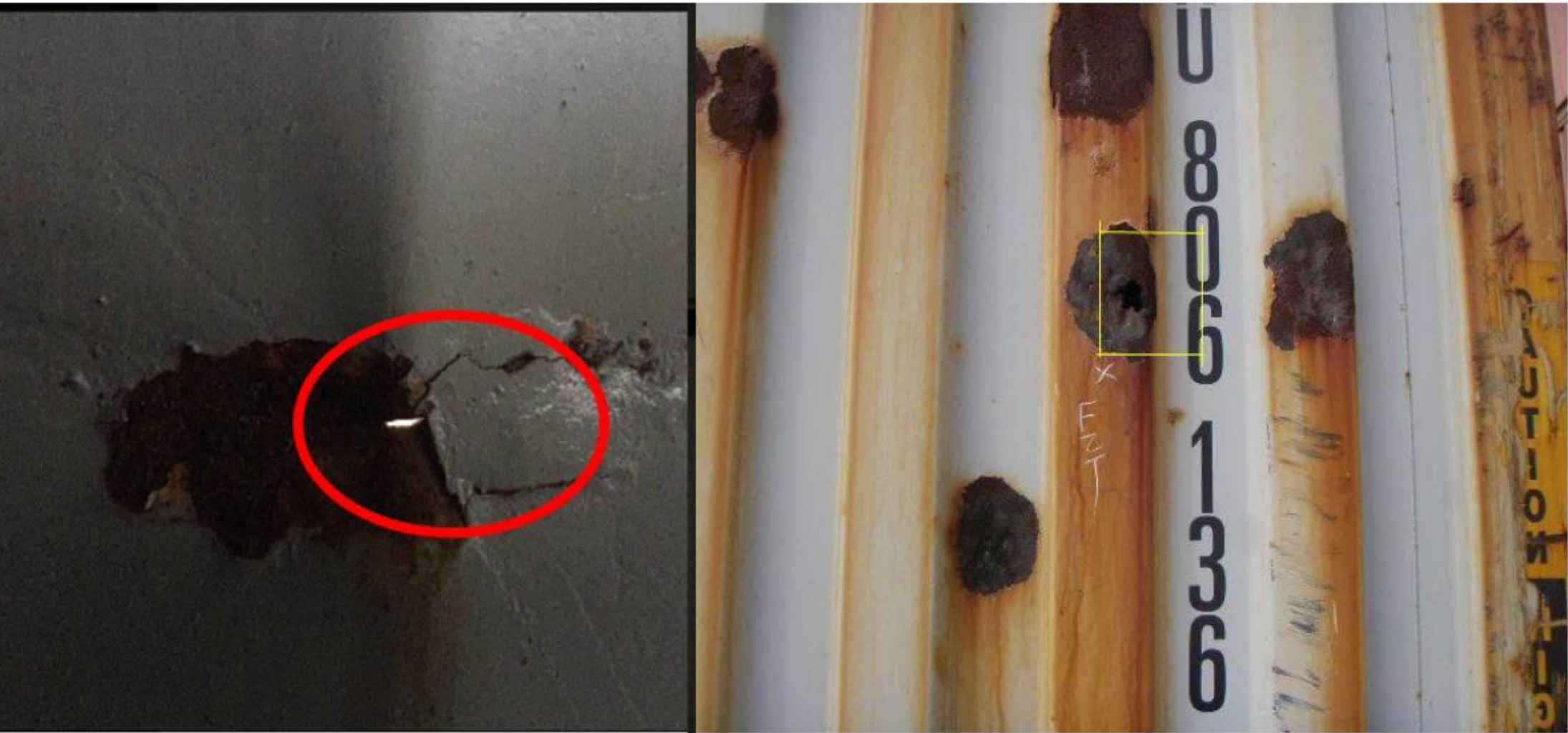
- 1) Structurally sound and in accordance with Maersk Container Inspection Criteria (MCIC), meaning safe and weatherproof condition.
- 2) Functional door securing sealing components.
- 3) In compliance with CSC, TIR, ISO and AQIS requirements.

Below is not acceptable scenarios (with photos) for container grading.

Non-watertight containers are unacceptable for any container grade. Pay close attention to door gaskets and the rear frame.



Holes are not acceptable for any container grade condition. Refer to MCIC.



Infestation, of any form, is not acceptable for any container grade.



External Panels corrosion excluded for Grading

Generally, and for all container grades, external panels can be found with corrosion, it is a common condition associated with container age. All grades follow MCIC thereby not affecting cargo.



Grade categories MAERSK EQquipment

From lowest to Highest quality containers

Grade Q: Associated to Scrap cargo shipments

Grade E: Associated to General cargo shipments

Grade K: Associated to General cargo – Clean

Grade M: Associated to Food grade type shipments

Grade S: Associated to Flexi-bags shipments and Premium Food grade

Container Grading Criteria Contents

- 1) Transferable stains and rust of inner panels
- 2) Transferable stains of inner floorboard
- 3) Internal panel W&T condition
- 4) Panel Dent
- 5) Repair on panels
- 6) Floorboard situation
- 7) Odor
- 8) Container Age

Container Grade E – GENERAL CARGO

This standard is defined as **GENERAL CARGO** container and released in accordance with MCIC. Conditions for this grade permits:

- a. Transferable stains and acceptable rust spots.
- b. Transferable stains acceptable on floors
- c. Container is under normal wear and tear condition.
- d. No obnoxious odors.
- e. No previous cargo residue.

GRADE E – General Cargo container

Interior panels may have transferable stains and rust spots.



Container Grade E – GENERAL CARGO

Floor is dry, and transferable stains may be present.



Container Grade E – GENERAL CARGO

Panel repairs and patches under normal condition and in compliance with MCIC.



Container Grade Q – SCRAP CARGO

This standard is defined as GENERAL CARGO (Grade E) with exception of following requirements:

- a. **Must** have an age older than **10 years**.
- b. Accept serious internal dirty for panel and floorboard.(photos below)

Suitable cargo: Scrap metal, Scrap plastic, Timber logs, Stone blocks, etc.

GRADE Q – Scrap Cargo container

Containers under this category must be older than **10 years**. Panels may have extensive scratches, rust and dents, but no holes.



Grade Q – SCRAP CARGO container

Floors splinters and wet transferable oil stains are acceptable.



Container Grade K – CLEAN CONTAINER / PREMIUM

This standard is defined as GENERAL CARGO (**Grade E**) with exception of following requirements:

- a. No transferable internal stains on floors.
- b. No transferable internal panel rust. Non-transferable rust stains do not require paint touch up.
- c. No transferable Glue.

GRADE K – General Cargo Clean container

Inner panel corrugations that are in contact with cargo are clean. Remaining corrugations may have scratches and paint damage. Previous cargo labels, nails, and cargo debris have been removed.

Internal panels are found without transferable markings, glue and corrosion.



Grade K – General cargo clean container

Container floor is dry with no transferable stains or odours. Non-transferable oil spotting on floors is acceptable.



Grade K – General cargo clean container

Non-transferable rust or stains do not require paint touch-up or cleaning.



Container Grade M – FOOD

This standard meets all the requirements of a “clean” container with additional consideration given for “food/food-related” or “cube-sensitive” products that may come in direct contact with interior surfaces.

- a. Interior painted surfaces are free of damage, transferable rust stains and flaking paint.
- b. Floor and interior surfaces will be clean and free of loose dirt and dust.
- c. The floor will be free of rough gouges(**only grinding on surface allowed**), holes, splinters, un-even height boards and exposed fasteners.
- d. All existing repairs are sealed and painted with no sharp edges protruding.
- e. Existing dents meet customer requirements for cube sensitive cargoes.
- f. No offensive odor - mould, paint and solvent odor free.
- g. External ex-IMO labels glue, cargo labels and remains on lashing bar/rings to be removed.
- h. Container's age subject to a Grade M should be **equal or lower than 7 years** or be in a fit for purpose condition.

GRADE M – Food Grade container

Panels are rust free and in acceptable condition. Previous cargo labels are removed.



Grade M – Food Grade container

Floor gouges are not allowed
board heights. No obnoxious odours or transferable stains.

No protruding floor retainers, splinters or uneven
board heights. No obnoxious odours or transferable stains.



Grade M – Food Grade container

Interior panels may have minor scratches but are rust free. The interior surfaces are clean and smooth, with no residues or obnoxious odours.



Container Grade S – PREMIUM FOOD GRADE / FLEXIBAGS SHIPMENTS

This standard meets all the requirements of a **Grade M** container with additional consideration:

- a. No patches/inserts on panels and floors. Panels shall have no dents within 3 consecutive corrugations.
- b. Floor and interior panels shall be free from holes, burrs, splinters, stains and sharp edges.
- c. Door recesses must be present, if bulkhead is to be installed for bulk cargoes.
- d. Additional internal condition premium grade requirements.

GRADE S – Flexi tank Shipments and Premium Food Grade container

Grade S container side walls are dent free, and according to customers requirements. Walls are free of patches and insert repairs.



GRADE S - Flexi tank Shipments and Premium Food Grade container

Door recess is present for bulkhead installation, where required, and in acceptable condition.

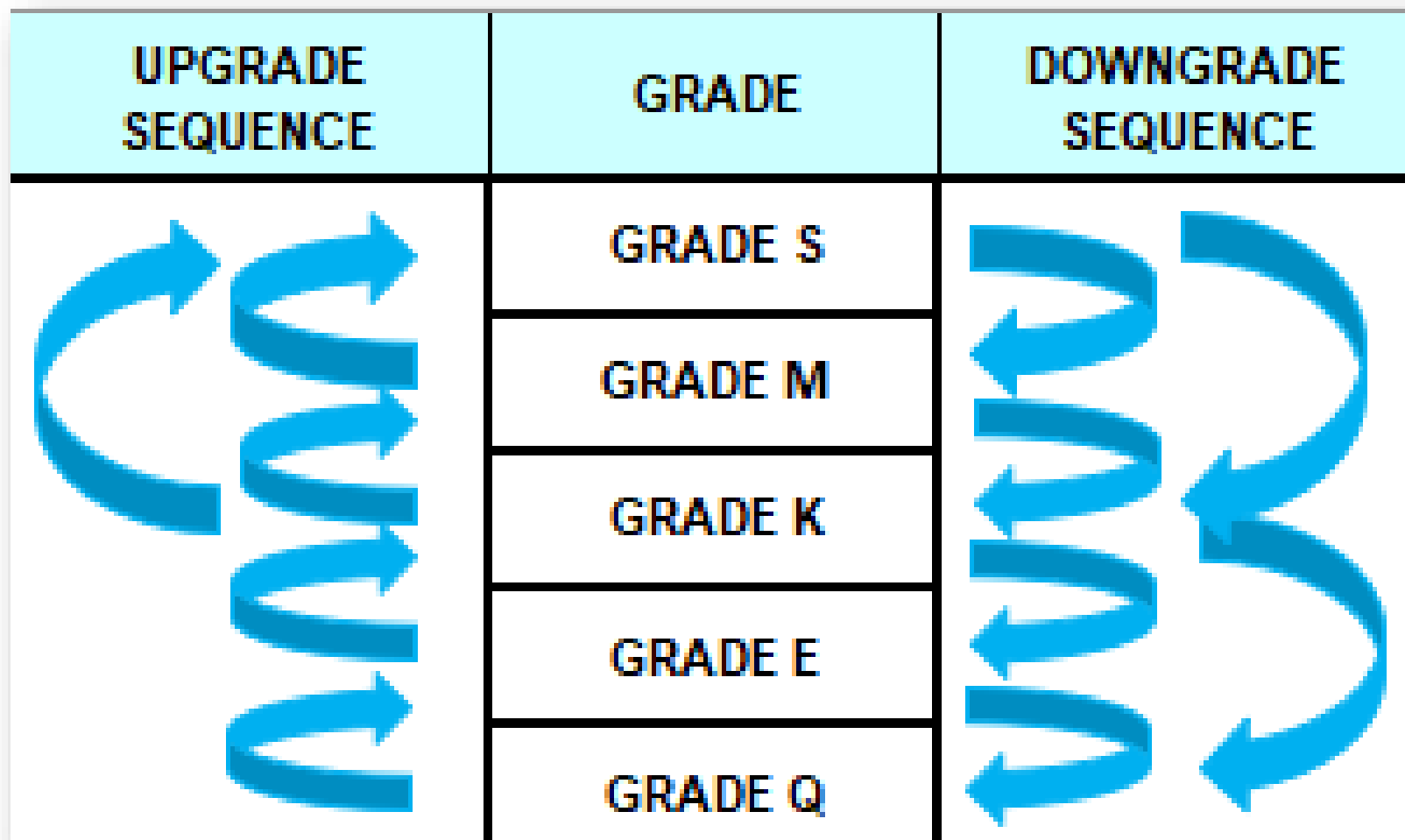


Summary - Container Grade category

Grade	Internal Panel	Floorboard	General condition	Panel Dent	Odor	age
Q	Transferable stains and rust acceptable	Transferable stains acceptable	Normal W&T	Within MCIC	No obnoxious odors	above 10 yrs
E	Transferable stains and rust acceptable	Transferable stains acceptable	Normal W&T	Within MCIC	No obnoxious odors	
K	No Transferable stains/rust	No Transferable stains	Normal W&T	Within MCIC	No obnoxious odors	
M	No Transferable stains/rust, free of flaking paint	Clean, flat and no any material missing	no corrosion	meet customer demand	No offensive odor	within 7yrs
S	Free of patches and insert repairs	No partial repair.(only whole floor replace)	no corrosion	meet customer demand	No offensive odor	

Grade adjustment Rules

- Container labelled as Q can be upgrade to E
- Container labelled as E can be upgrade to K and downgrade to Q
- Container labelled as K can be upgrade to S&M and downgrade to E&Q
- Container labelled as M can be upgrade to S and downgrade to K
- Container labelled as S can only be downgraded to M & K



How to adjust Grade in Mercplus

Input below STS code in Mercplus for containers with its grade, after WO completion, Grade information will adjust in Maersk's system

Code	STS description NEW	Max. pcs	Max. hour	Mat Celing
0926	Container Grade S - No cost associated	1	0	0
0927	Container Grade M - No cost associated	1	0	0
0928	Container Grade K - No cost associated	1	0	0
0929	Container Grade E - No cost associated	1	0	0
0930	Container Grade Q - No cost associated	1	0	0

Thank you!